



# **AVANTA**

## **OFFICE INTERIOR**

## **PROJECTS 3**



Avanta UK Ltd is an independent company with over 20 years experience in designing and sourcing equipment. Long term partnership arrangements and rigorous appraisal of our portfolio of extensive manufacturing partners ensures that our clients have access to high quality and competitively priced standard and non-standard products.

Our specialities include mezzanine floors, storage systems (including warehouse shelving, pallet racking, longspan shelving and mobile shelving systems) and interior solutions (including office partitions, office storage, steel partitions, mesh security cages and workbenches).

We cover the whole of the UK and work closely with the major manufacturers offering warranty, peace of mind and on going support.

See more case studies at  
[www.avantauk.com](http://www.avantauk.com)

Some of our clients...

NEXT

END.

Jet2

B BRENNTAG



Lockwood  
your supply chain partner

ph Polyco  
Healthline

T.K.maxx

Joe Browns



SPORTS  
DIRECT

SPORTSHOES  
.COM

♥ YOURS

febi  
bilstein

Barbour

mamas  
& papas

ZYRO  
FISHER

James Cargo  
FULFILMENT

3pluk

Schneider  
Electric

SULZER

antalis<sup>TM</sup>

MEGGITT

DS  
Smith

Network  
Plus

Unilever

CARNAUD METALBOX  
ENGINEERING

AFLEX HOSE

GRADUS

Geek+

Stelrad

enfinium

ALLSAINTS

arrowxl  
beyond delivery



Web: [www.avantauk.com](http://www.avantauk.com)

Email: [sales@avantauk.com](mailto:sales@avantauk.com)



# New Retail Operations Centre (R.O.C.) Middlewich

After an extensive property search, Jet2 successfully acquired unit 11 of Tritax Symmetry Park in Middlewich. The unit is 149,000 sq ft and is perfect in size and location for the client's intended use of the facility – A dedicated centralised Retail Operations Centre (R.O.C.).

The R.O.C. is the centralised location servicing eleven regional UK airport locations with sealed carts of in-flight retail goods. This includes the storage, sortation, picking and despatching of gifts, fragrance, and snacks in sealed carts to be sent to the in-flight regional operations teams. This is with the aim of delivering the right products at the right time for customers and thus improving overall customer experience, eliminating stock out situations. There will be circa three thousand carts in circulation e.g., split between own vehicles, on aircraft and at the R.O.C. Creating an End-to-End Logistics system.

This is the first centre of its kind in the UK aviation industry taking in house control enabling Jet2 to stock, manage and distribute millions of in-flight retail products for passengers to consume.

This major development offers Jet2 more control over the operation and offers significant cost savings.

Avanta UK Ltd worked very closely with Jet2 and in conjunction with Hatmill (Supply Chain & Logistics) equipped the premises internally and externally with a comprehensive turnkey

package to enable Jet2 to have a fully operational facility. These works / Services included:

- Full Principal Contractor Role – Including site set up and the running of the site for a set period. Please see Principal Contractor - Avanta UK for further details.
- Sprinklers – Design, Supply & Installation with tanks, pump house
- Concrete Pads for Services and further civil works.
- Full External Perimeter Security Fencing
- High Specification ANPR barrier for access and egress to main car park
- Mechanical & Electrical Works throughout including the Jet2 IT department's data requirements.
- All CCTV, Fire Alarm, Intruder Alarm, and Wireless Access Points
- Feature Reception desk
- Gunnebo Access Gates
- Access Control Systems – In line with current airport security specification.
- Additional Access and Roller Doors to suit the operation.
- Cut Out and Glaze Viewing Area from Office to Warehouse
- Full Ground Floor Facilities Fit Out, including.
  - o Break Out Areas
  - o Canteen Facility
  - o Toilets
  - o Locker Rooms & Shower Facilities
  - o Reception
  - o Multiple Meeting / Training Rooms – Subdivided by Operable Walls
  - o Glass Partitioned areas – double and single glazed.
  - o Hygiene Wall for Locker Room Facilities
  - o Flooring – hard wearing durable vinyl in ground floor facilities area and carpeting within ops office and first floor.
- o Furniture – in Bespoke Jet2 colours
- o Ceilings
- Full Fit Out of First Floor Office Suite – taking a typical class A fitout to class B to personalise the facility for Jet2.
  - o Created Multiple Meeting Rooms, Offices & Open Plan Area
  - o Office Furniture
  - o 2x Supply and installation of acoustic meeting POD's
  - o Created Viewing Area from Office to Warehouse with 54mm thick fire rated glazed screen.
- Created additional large storage area with vertical personnel access ladder and safety handrails.
- Carton Live Storage Area – Bespoke solution designed in conjunction with Hatmill. 50x Pack stations (3x distinct types) Constructed using carton live storage bays (Shelving bays with angled roller beds). Stock is pre-loaded to the rear of the unit on FIFO basis and the operator picks from the front of the unit and uses a fixed workbench to consolidate and pack into totes and carts.
- Circa 100 Linear metres of Single Skin Steel Partition to subdivide the warehouse
- Created a Two-Tier Control Room Suite with a fire rated Mezzanine Floor and Steel Partitioning including toilet pods and full fit out with bespoke furniture.
- Secure Bunded Warehouse Area with two security X Ray scanners and laser alarm ceiling
- High Bay Pallet Racking Area for circa two thousand pallets with bespoke smoke baffles to meet insurance requirements.
- Safety Barriers & Protections including the industry leading polymer barrier system – ASAFE supplied and installed to protect personnel and property.



- Function as Principal Contractor for PHASE 2 – Automation. Utilisation of Vanderlande Adapto Shuttle System - Intelligent shuttle-based automated storage and retrieval system (AS/RS) with built-in sorting and sequencing capabilities.
- Responsibility for delivery of all Health & Safety objectives throughout both phases.





150,000m<sup>2</sup> Full fit out

Internal and external works

Distribution of retail goods

Principal contractor role

















# A turnkey project for Advanced Dynamics

Avanta completed a 170 square metre fire rated mezzanine floor with offices and showroom project. In the interim Advanced Dynamics has grown and invited Avanta back to tender for a further "Workspace Creation" project.

Avanta successfully tendered for and completed the following works:-

## Below Mezzanine:-

- Refurbished the existing reception – This included new energy efficient lighting, new ceiling, decorations and Karndean flooring.
- Created a new access corridor from stud partitioning.
- New modern kitchen and break out area.
- Toilets were fully refurbished and modernised.
- Formed a new showroom under the mezzanine for display of machinery. 2.7m high doors were supplied and fitted for the machine access.
- Created a new archive storage area.
- LED lighting with PIR & Smoke detection.

## Above Mezzanine:-

- Refurbished the 2013 offices with new suspended ceilings, the latest LED lighting and new decorations.
- Created a new 'mini' showroom area from partitioning.
- Formed a new glass boardroom and additional meeting office with new branding idea, Karndean, electrics etc.
- All new air handling and electrics.
- Anti-slip Karndean throughout.
- New office furniture and storage equipment for upstairs.

## Malcolm Little commented-

*"You know that feeling you get when a project exceeds all expectations? Well that is what Avanta achieved for me with this project. They have transformed our working environment to budget, on time, with a friendly, helpful and courteous team on site at all times. Thanks to all at Avanta"*





Workplace creation project

170m<sup>2</sup> mezzanine floor

Kitchen and break out area

Refurbished offices













































# New UK Head Office For The Global Market Leader in Chemical Distribution

Brenntag is the global market leader in chemical distribution operating a global network with more than 530 locations in 74 countries and a global workforce of more than 14,000 employees.

In the UK the company had simply out grown it's UK Headquarters and wanted to remain in a similar location to retain the 160 plus current staff and with a view to allow for expansion.

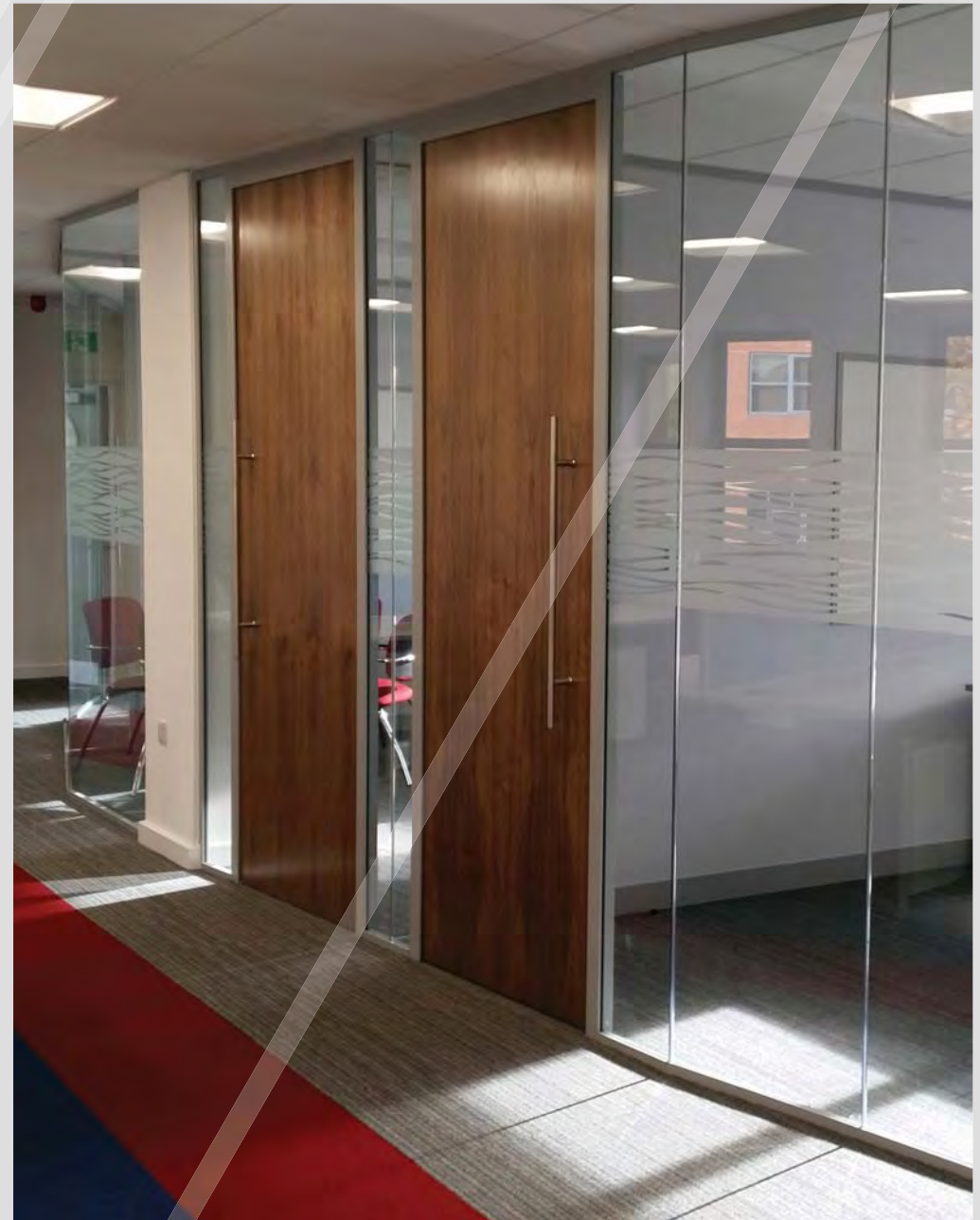
The Lawnswood site was identified as a location that could deliver what was required and over 3x floors was a blank canvass to work on. Working closely with the client and Avanta's interior designer, a modern office interior was designed utilising many years of experience in office design, space planning and sourcing the best manufacturers.

Proposals were presented utilising 3D visuals and mood boards with the strong Brenntag corporate branding theme at the forefront. With a project of this size and nature inevitably the design goes backwards and forwards with multiple revisions to refine the design to suit.

Avanta provided all enablings which included site cabins, contractor welfare facilities, general labourers, skips, visqueen, PPE & barriers to keep the site safe, clean and tidy to promote the smooth running of the contract.

Andrew Chipp (Avanta) commented *"I am really proud of the Avanta team on delivering this project and giving Brenntag a modern facility to be proud of. We fitted out the old Yeadon office in circa 2000 and this new project shows how much Brenntag has grown in the UK and how office design coupled with technology has progressed especially in the last decade. This site is a showcase of what we can do we hope to complete many more in the future."*

Gareth Dobinson (Brenntag) commented *"We are delighted with the transformation and delivery of the Brenntag vision. Working closely with Andrew and the team at Avanta we have created a workplace with the WOW factor for our employees to thrive in."*





























**BRENTAG**





# A Complete Office Re-fit and Laboratory Installation

**Leeds based Interior Fit out Specialist Avanta UK has recently completed a major multi-faceted office and laboratory project for the now Wakefield based SNF (UK) Ltd.**

SNF (UK) Ltd (The Client) had worked within the confines of an older building in Normanton that was more warehouses with a small set of outdated offices attached and no longer suited the business needs. With the continued growth of the Company, the warehouse and logistics of the operation are now outsourced and the motivation for a move centred on finding a local building to house 50 existing employees in a modern office suite along with building a state of the art laboratory testing facility.

## **The Project**

The Client had purchased a new two storey building in Wakefield that required a full turnkey interior fit-out scheme to not only suit the needs of the business now but also in the future.

SNF approached Avanta UK Ltd amongst a select number of other local providers with the task of creating a modern and functional workspace over 2 floors for various staff and departments.

Once the specification and design was clarified and checked Avanta were awarded the contract.

A major part of the project was the specification of the office furniture. As with

many elements of the works, members of the SNF team worked closely with Avanta to refine the specification. This involved the client visiting Avanta Manufacturing Partners.

The Laboratory was built from the proprietary brand Titan system. Titan is a high-quality double skin steel partitioning system designed for cleanroom applications. The two-line system was used to achieve a class 5 cleanroom environment as the appropriate air handling and HVAC systems were integrated.

## **The scope of this project included the following: -**

- Design and build Directors and Departmental offices, open plan main office, 3x meeting rooms, kitchen, informal meeting areas and toilets utilising various types of Partitioning Products
- Design and build of Laboratory from a double skin steel clean room partitioning and including air handling, trespa surfaced benching, fume cupboards, lockers, hazardous cabinets, vinyl flooring etc.
- Plumbing works to current standards (see later)

## **Outside works included: -**

- External Signage
- Roofing works
- Civil works to prepare concrete bases
- Created enclosed bin area
- Smoke shelter and canopy supplied and installed
- Car charging points – installed and commissioned





















# R KITCHEN RULES

EMPTY IT - FILL IT  
DIRTY IT - CLEAN IT  
OPEN IT - CLOSE IT  
SPILL IT - WIPE IT UP  
COOK IT - SHARE IT

**KEEP IT  
TIDY**  
PLEASE









# Office Conversion Project For Whitby Seafoods

Avanta UK Ltd working with the Komfort range of office partitioning products successfully tendered for this turnkey 'transformation' project.

## The project involved in summary: -

- Space planning - With a view to the client's current requirements and future growth plans.
- Office furniture - Utilising a bench desking system to optimise space.
- Partitions & Ceilings - Avanta utilised the market leading Komfort Polar branded double & single glazed office partitioning product to create the offices.
- Test kitchen units & appliances.

## Internally Avanta created: -

- 1x Reception area - Created from double glazed polar partitions with manifestation, drift wood effect Karndean flooring, reception counter and furniture and suspended ceiling
- 1x Main office - Large open plan office with oatmeal heavy contract carpet tile floor coverings, 8 linear metre run of KM3 Storage Wall, Double Glazed Polar Partitions, doors & ironmongery. Bench desking system with mesh executive chairs.

- 6x Executive offices - Single Glazed Polar Partitions, doors & ironmongery, furniture.
- 1x Presentation room.
- 1x Test kitchen - Create kitchen area for clients to sample the produce.
- 1x Purpose built server room - with additional cooling.

The project was in 2 phases to an agreed schedule of works to minimise disruption to a working office environment and included: -

- Cutting out and fitting full height double glazed windows into the existing warehouse wall.
- Re-cladding external building at the front.
- Supplying & installation of external doors and fire escapes.
- Re-cladding and lighting the external raised canopy.
- All electrics - Lighting, Heating / Cooling & Ventilation.
- Screeding floor and channel cutting for electrics & floor coverings.

Working very closely with a representative of Whitby Seafoods who had a clear vision of the desired look and feel of what was required to be inkeeping with the brand values of Whitby Seafoods, Avanta delivered an attractive functional workspace within agreed time frames.

A big part of the design was the nautical theme with the following features: -

- Whitby beach huts on the glass manifestation.
- Port hole vision panels in doors.
- Colour scheme of carpets, storagewall etc.
- Whitby branded graphics.
- Drift wood effect Karndean flooring.
- Timber slatted effect vinyl to executive offices.

**Avanta comment** - "We have worked with Whitby Seafoods over the years and were delighted to hear of their expansion plans and the subsequent order. It has been a fascinating project to be involved in and the transformation from cold dark warehouse to a modern office suite is great to see. I am really proud of our project and multi-trade installation teams who carried out the fit-out."

























# New Office For Leeds Lord Mayor Charity Appeal

Leeds based Interior Fit Out Company **Avanta UK Ltd** successfully tendered for the office fit out works for the award winning charity **Specialist Autism Services (SAS)**.

## About Specialist Autism Services (SAS)

Specialist Autism Services' mission is to support adults with autism and Asperger's Syndrome by the provision of health, education, training, sports, creative art and counselling activities, which promote their social inclusion, training opportunities and ultimately employability.

Their highly trained staff team provide essential information, training and support to adults on the spectrum, their parents/carers, health professionals and also contribute to research in this specialist field.

## The Project

The Leeds office on Dewsbury Road was no longer fit for purpose for a growing charity that supports over 200 adults from its bases across Yorkshire, supporting them to develop social skills, confidence and ultimately, employability.

Autism is thought to affect about one per cent of the population and SAS needed to operate out of a workspace that could provide more flexibility in the support of its service users (members).

The new office facility (located just off Wakefield Rd, LS10) offered a great open space that required subdividing using glazed office partitioning to provide: –

- Dedicated counselling & meeting rooms
- Staff room
- Kitchen dining room
- Welfare facilities
- Workshops
- Quiet areas
- IT Suite
- Operations offices
- Boardroom & Training Facilities

Certain suites / rooms are fitted with push button access locks for added security.



























### CONSULTATION / SURVEY

We carry out a free, no obligation site survey to decipher your exact requirements.

### DESIGN SERVICE

At Avanta we have the expertise to design your workspace to suit your needs.

### PROPOSAL

We prepare a document that will highlight the key areas of the potential project.

### PROJECT PLANNING

We will appoint you a Project Manager who will be a single point of contact during your installation.

### PRODUCT DEVELOPMENT

We work with you and with our manufacturing partners to source the best products for the job.

### PROJECT MANAGEMENT

We will provide information as required and oversee the smooth running of your project.

### HEALTH & SAFETY

Projects are delivered safely and in accordance with the latest regulations.

### INSTALLATION

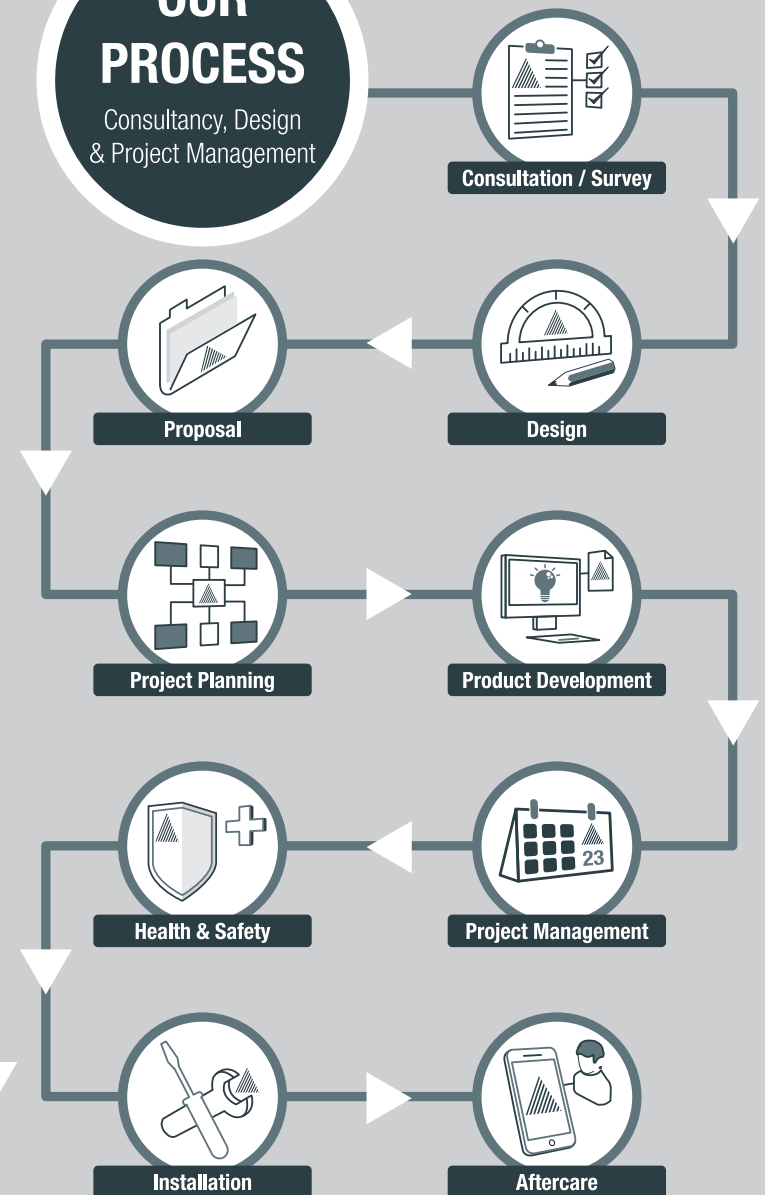
Equipment is installed in accordance with SEMA guidelines by SEIRS qualified installers.

### AFTER CARE

We offer further ongoing technical support and maintenance if required.

## OUR PROCESS

Consultancy, Design  
& Project Management





**MEZZANINE FLOORS**

**OFFICE INTERIORS**

**PALLET RACKING**

**SHELVING SYSTEMS**

**STEEL PARTITIONS**

**WORKPLACE EQUIPMENT**

**WAREHOUSE FLOORING**

**PRINCIPAL CONTRACTOR**

**AVANTA**

**Tel: 0113 384 8777**

Web: [www.avantauk.com](http://www.avantauk.com)

Email: [sales@avantauk.com](mailto:sales@avantauk.com)

**Avanta UK Ltd** - Unit B1, Astra Park, Parkside Lane,  
Leeds, West Yorkshire, United Kingdom, LS11 5SZ

