

AVANTA

WORKSPACE CREATION



CASE STUDY

**End to End
Storage Solution**
Mezzanine & Multi-Tier Shelving



Practical completion of multi-tier shelving and mezzanine floor project.



Level one of fire rated mezzanine floor with multi-tier shelving structure.



Top level of the structure.

END to End Storage Solution

Leeds based Storage Equipment Specialists Avanta UK Ltd have completed one of the largest multi-tier shelving systems projects in the UK for an influential multi-channel menswear retailer.

The online demand for cutting edge sportswear, trainers and the best in contemporary menswear has driven the requirement for this large-scale expansion programme. Alongside UK based flagship stores the client has a growing online presence servicing the UK and to over 80 Countries Worldwide fuelling the requirement undertake this project.

Having worked with the client before, Avanta UK already had an insight into what the best solution for the client would be in order to increase storage capacity of a warehouse extension for box storage utilising the full height, width and length available. This resulted in refining a design for a multi-tier shelving system incorporating a mezzanine floor.

Avanta UK Ltd successfully tendered for the project against a very competitive field and were awarded the contract. It could not be anticipated that this project would be undertaken during the Covid-19 National Lockdown. The multiple trades teams had to complete the installs whilst following Government advice in all aspects.

This also could have impacted the supply of raw materials with various factories closing or operating on a reduced staff number. However, despite this situation the project was successfully completed in the 20 week programme required working along side the Sprinkler company, Electrical Contractor and other Trades.

The contract worth circa £1.8 million is for one of the largest multi-tier shelving systems in the UK giving the client: -

- 3 Levels plus ground – (Ground, Level 1 & Level 2 for shelving and Level 3 for storage and potential growth.
- Each level measures 145m in length x 35m width giving 5075m square per level x 3 in the structure = 15,225m square.
- If you include the ground level, there is over 20,000 square metres of storage.
- 15,000 Shelves within the structure.
- A capacity of 550,000 shoe boxes can be stored.

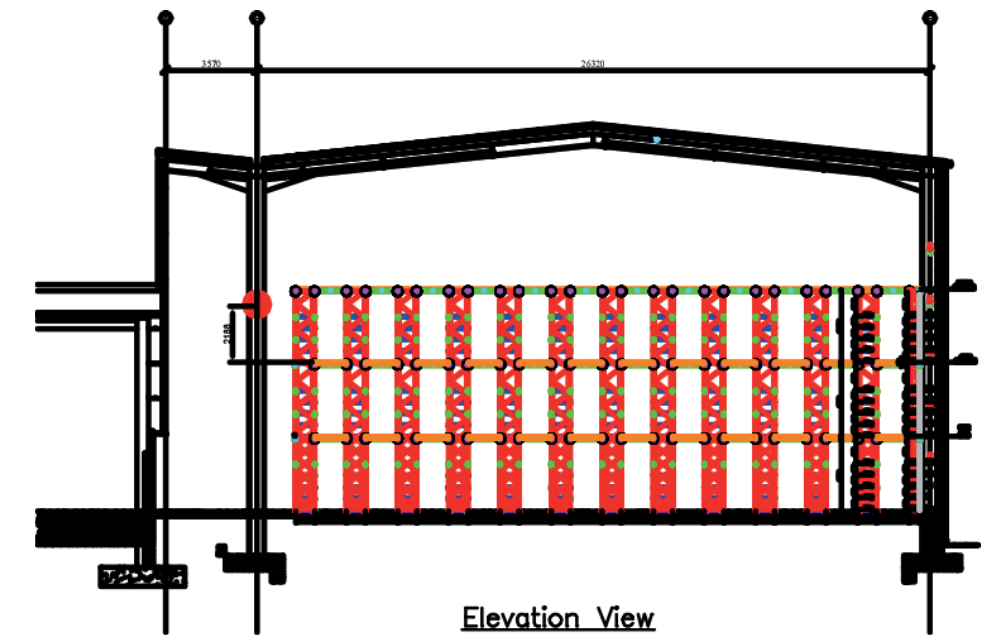
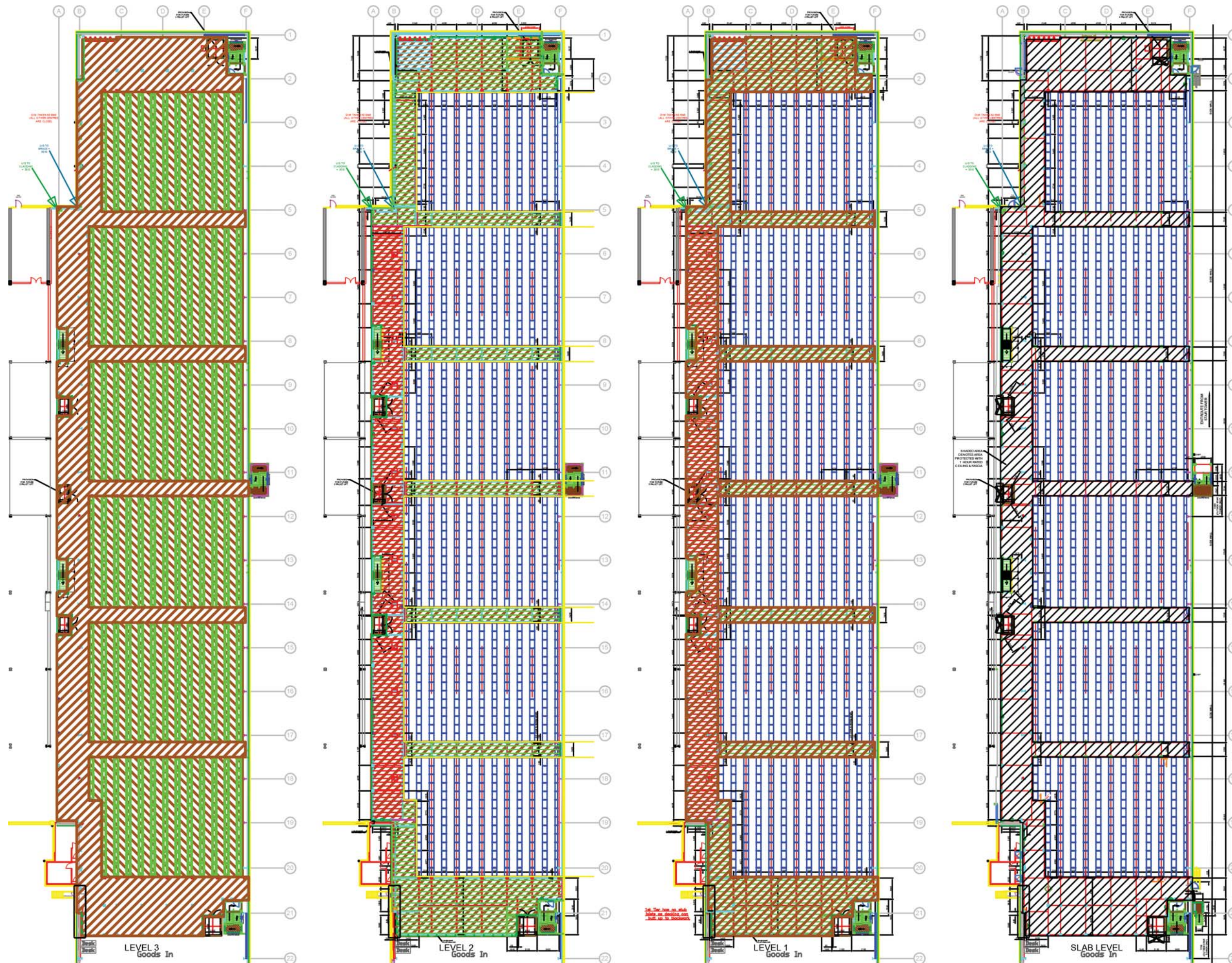
Access to each level for product included 3x goods lifts. One of which had capacity for 4 pallets and the other 2 lifts could accommodate 2 pallets each. Pedestrian access is via 4 staircases of which 2 were enclosed.

Avanta UK also built a galvanised staircase for outside with access to all areas as well as various fire exits as required.



Ian Armstrong, Project Manager for Avanta UK commented – “I have lived and breathed this project for the 20 week duration and it provided me with various challenges to overcome including the period of lockdown. I am proud of the various teams I have managed and worked alongside to get this project over the line and the result is fantastic.”

Wayne Thomas, Project Sales for Avanta UK Commented – “This was a great contract win for myself and Avanta after many weeks of refining the design to create an impressive storage solution for the client that will help them satisfy their growing demand now but also in the future. This project displays the capability of the Avanta team, and it is a solution that other large Internet Retailers could adopt going forward.”



- 3 Levels plus ground – (Ground, Level 1 & Level 2 for shelving and Level 3 for storage and potential growth.
- Each level measures 145m in length x 35m width giving 5075m square per level x 3 in the structure = 15,225m square.
- If you include the ground level, there is over 20,000 square metres of storage.
- 15,000 Shelves within the structure.
- A capacity of 550,000 shoe boxes can be stored.

ANOTHER PROJECT INSTALLATION BY

AVANTA
WORKSPACE CREATION

Tel: 0113 384 8777

Email: sales@avantauk.com Web: www.avantauk.com

Mezzanine Floors
Office Interiors
Pallet Racking
Shelving Systems
Steel Partitions
Workplace Equipment

CHAS Constructionline

And so the project begins with initial site set up.



Clear empty warehouse space for the installation teams to work in apart from the packing operation at the far end of the building.



The first delivery of main steel columns arrives to be deposited in to the lay down area within the warehouse.



Offload of the first vehicle commences.



The first column is erected and floor fixed. 



Purlins are fitted into the 1st section of mezzanine build.



Handling equipment is utilised in connecting a main beam into the mezzanine structure.



The mezzanine element of the project is starting to take shape with access staircase to the rear left and 3x levels of beams and columns clearly visible.




Shortspan steel shelving installation is under way.



Shelving installation is progressing forward between the mezzanine elements.



View from the top level shows the mezzanine components and the shelving. 



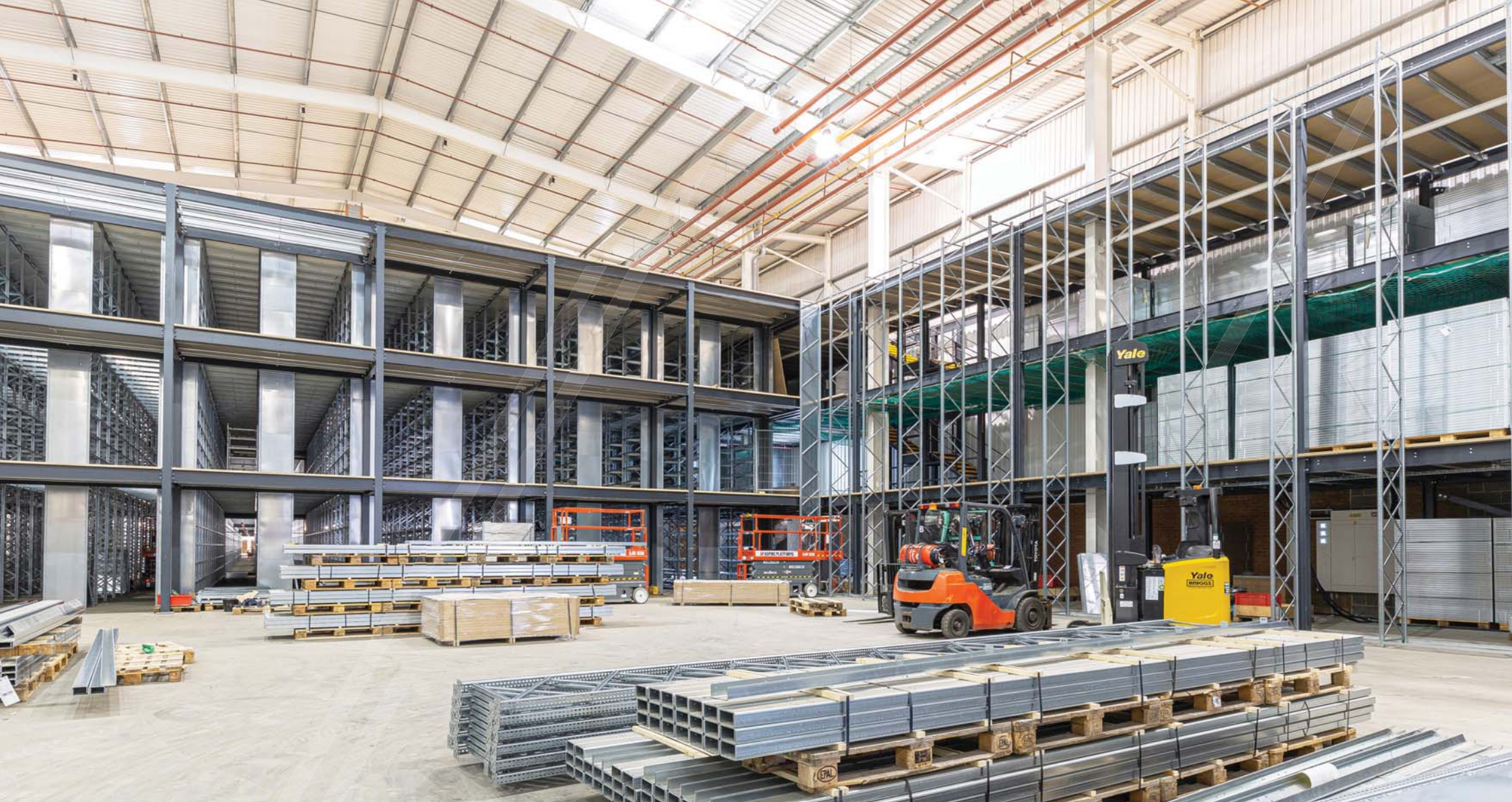
Top level decking commences.



Mid way point of the build as the multi-tier structure progresses.



Halfway there! View from slab level.



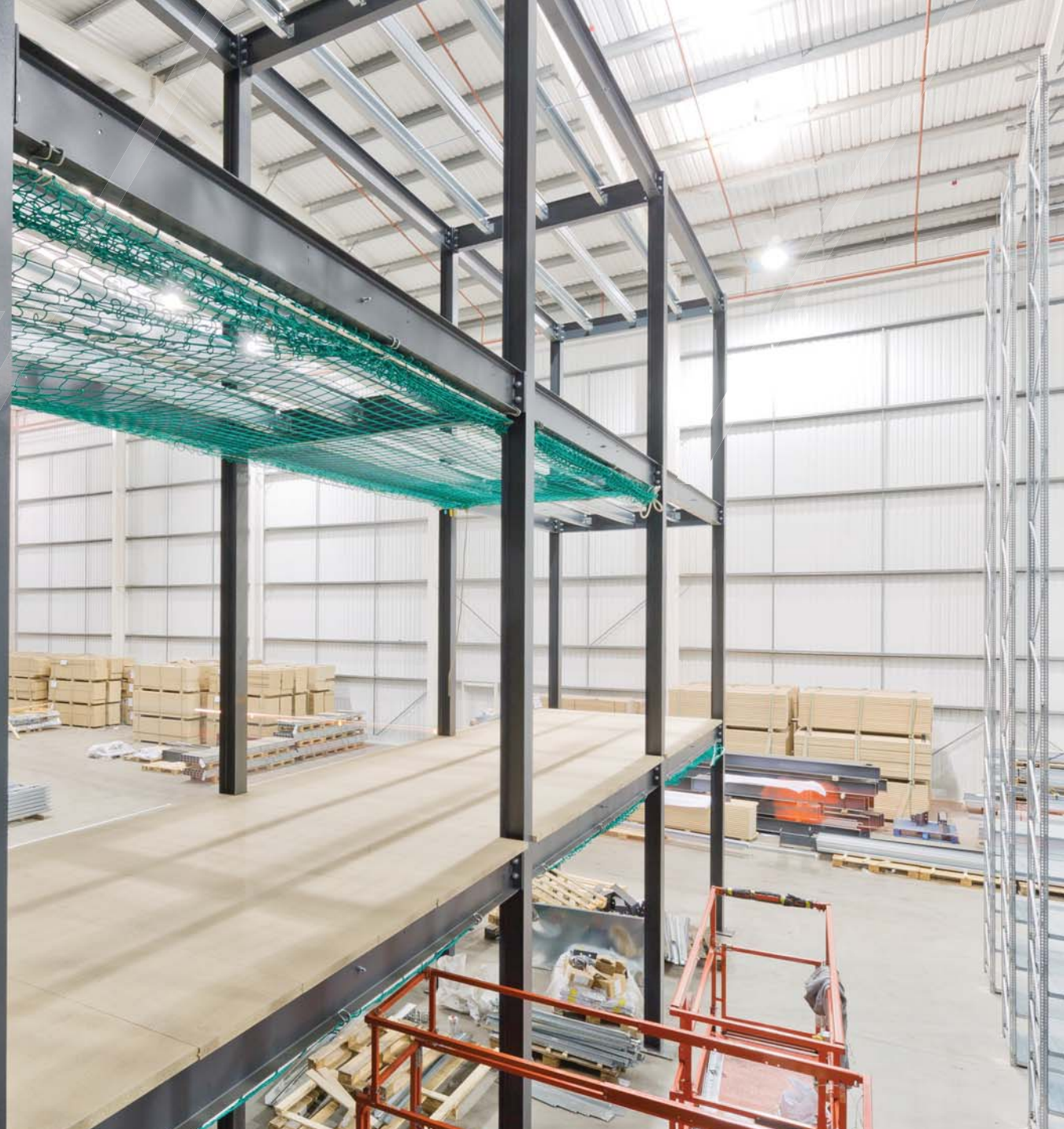
Pallets of shelving to the right hand side in preparation of the next phase of the build.




Work in progress showing the main building columns.



Work in progress showing safety netting.





 Ground level all steel shelving aisle prior to walkway installation.



Working at height - shelving build in progress.




145m aisle length of galvanised steel shortspan shelving.



Sprinkle pipework on level 2 and all shelves fitted.



Fire rated mezzanine element complete. Columns encased and suspended ceiling fitted with sprinkler heads.



Additional safety with steel mesh fitted to the edge protection to arrest the fall of small boxes to all levels except ground.



One of 3x goods lifts giving access for pallets to each level.
This lift can accommodate 4 pallets.




Mezzanine Goods lift with doors open to take up to 4 pallets shown at the top level.
Pedestrian access also available via enclosed fire rated stair case.



Top level measuring 5075 square metres for future expansion.



Top level image shown from the opposite end to the previous page. 



One of 4 access staircases to each level of the structure. 2 of the staircases are enclosed.



External structural galvanised steel staircase. Installation complete with groundworks, cut outs, and the supply / installation of external fire doors.

AVANTA

WORKSPACE CREATION

Avanta UK Ltd is an independent company with 20 years experience in designing and sourcing equipment. Long term partnership arrangements and rigorous appraisal of our portfolio of extensive manufacturing partners ensures that our clients have access to high quality and competitively priced standard and non-standard products.

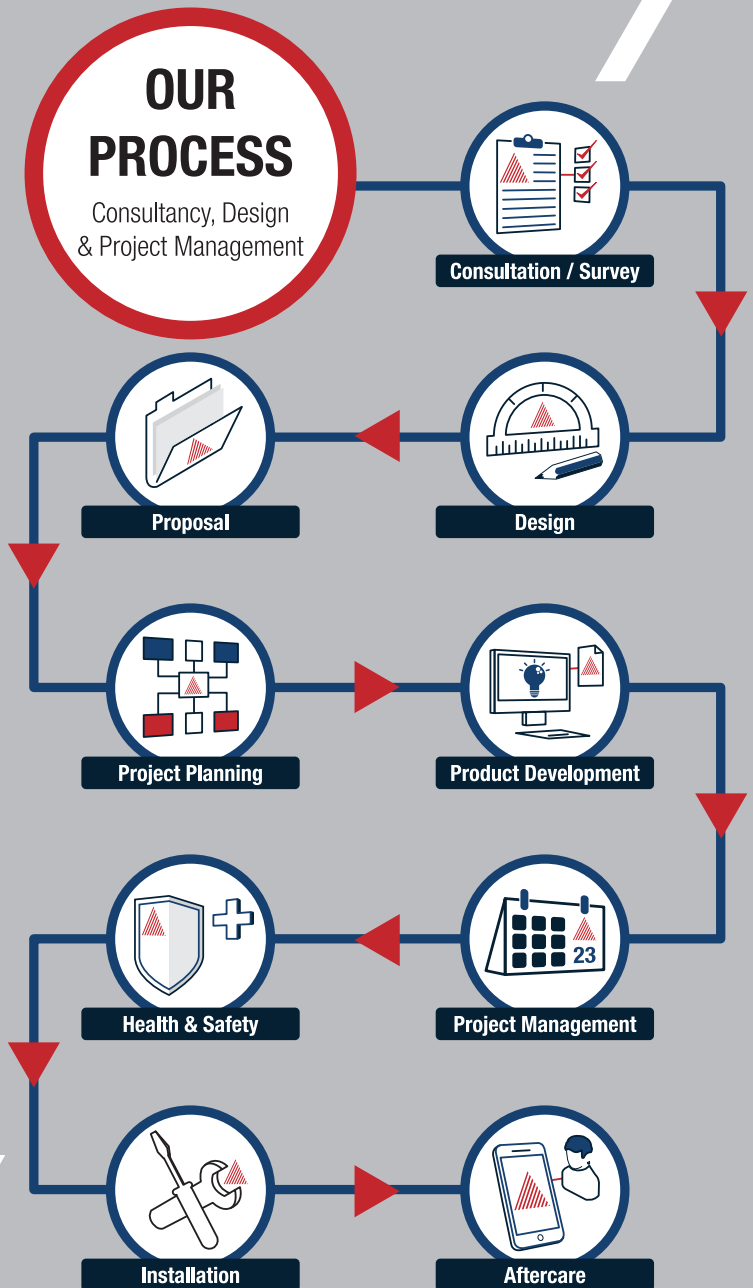
Our specialities include mezzanine floors, storage systems (including warehouse shelving, pallet racking, longspan shelving and mobile shelving systems) and interior solutions (including office partitions, office storage, steel partitions, mesh security cages and workbenches).

We cover the whole of the UK and work closely with the major manufacturers offering warranty, peace of mind and on going support.

See more case studies at
www.avantauk.com

For a free, no obligation quote
Call - 0800 975 4933

Email: sales@avantauk.com



Mezzanine Floors

Office Interiors

Pallet Racking

Shelving Systems

Steel Partitions

Workplace Equipment

AVANTA
WORKSPACE CREATION

Tel: 0800 975 4933 / 0113 384 8777

Fax: 0113 384 8778

Email: sales@avantauk.com

Web: www.avantauk.com

Avanta UK Ltd • Unit B1 • Astra Park • Parkside Lane • Leeds • West Yorkshire • LS11 5SZ

