

AVANTA

Shelving Systems



Shelving systems for industrial and commercial environments

www.avantauk.com



Stormor shelving for the automotive industry

Shelving Systems

At Avanta UK we know that in order for our clients to run their businesses successfully they need to be able to maximise space by using innovative storage solutions and shelving systems. Our experts are on hand to advise you and design the storage solution that works best for you to help fully utilise the space you have.

Our shelving systems can also assist your business to run more efficiently by helping reduce time spent finding stock; another reason they are invaluable to our clients.

Our innovative and flexible shelving systems can be adapted to suit any size environment and come in a range of finishes that makes them perfect for many industries e.g. manufacturing, retail, distribution and many more.



Stormor shelving with mesh cladding & full height dividers



Economy shelving

With the economy of open Mono frames, the simplicity of one-piece Solo frames, or the clean lines of Duo frames, **Stormor shelving** offers it all.

Economy shelving is quick and easily assembled, requiring only a rubber mallet, this range of products offers fast and economic solutions to everyday storage problems.

The ultimate versatile heavy duty storage system, **Longspan shelving** is limited only by your imagination. Whether you're planning a simple low-rise shelving set-up or a large scale heavy duty storage facility, Longspan fits the bill.

Our full range of Shelving Systems are available at www.avantauk.com



Utilise your cubic space
not just your floor space

- IN STOCK SHELVING
- STORMOR SHELVING
- LONGSPAN SHELVING
- EURO SHELVING
- BDC SHELVING
- STOCKROOM SHELVING
- ARCHIVE SHELVING
- CHROME WIRE SHELVING



Longspan shelving



Heavy Duty Euroshelving
in a multi-tiered configuration

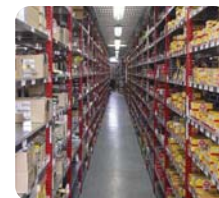
Wherever there's a need for storage, there's a job for **Euroshelving**. Modular in design for ease of assembly, Euroshelving offers almost limitless scope for the creation of customised storage facilities; and a complementary range of accessories extends its capabilities still further.

Avanta's range of **BDC shelving** helps satisfy insurance company requirements as the welded tubular slatted shelves enable sprinkler systems access to all shelf levels. BDC shelving is commonly used in the retail warehouse environment



In Stock
Shelving:

Contact us
for details



In Stock Shelving: (Delivered in 5 working days)

Z Rivet shelving - Strong and sturdy

Our new 'Z' profile rivet system offers robust effective storage for any application. The 'Z' profile beam offers incredible strength with a shelf height of 58mm. The system requires only a hammer to build and just taps together.

Expo 4 - Boltless shelving system

With Expo 4 its as easy as 1-2-3. The unique friction steel clip and shelf design allows the system to be safely erected in minutes. It now boasts one of the largest selection of modular capacities and sizes, along with an unrivalled range of accessories all finished in a high quality epoxy powder coat paint.

Expo 3 - Boltless shelving system

Expo 3 uses the same upright pattern as the EXPO 4 system. But it has a different shelf construction. Many of the accessories are interchangeable, *please call for details.*

For more information
call: 0800 975 4933



Shelving for all
environments



Our full range of Mobile Shelving is available at www.avantauk.com



Utilise your cubic space
not just your floor space

Mobile Shelving

Big Solutions for the Biggest Storage Needs.

- Choose push/pull, hand wheel-driven or FollowMe electric drive systems
- Works with all our shelving systems including Stormor, Euro and Longspan
- Combine with track systems to fit any floor
- Security locking options available for added security

The high-density, **Mobile shelving system** maximises floor space and storage efficiency. The Avanta mobile shelving system can create up to 100% more storage capacity for your filing, archiving and product needs.

How Does Mobile Shelving Work?

Only 1 access aisle is needed. The mobile rolling storage units can be moved singularly or together, generating an aisle as and where it is required, creating almost double the storage capacity.

When an item is required the particular shelving bay is identified and an adjacent aisle is created, by moving the mobile shelving units apart.

An additional benefit of mobile shelving includes security - mobile units can be closed and locked together to prevent unauthorised access.

Back of store **Economy mobile garment shelving** is ideal in saving valuable space in a retail stockroom environment. Single and two-tier options available.





Mobile office archive shelving

The Avanta **Mobile office shelving systems** are perfect for small or large offices as they are quick to install and simple to maintain and operate.

Our systems remove the need for aisles and use the full height of your office. So you get 100% more storage than static shelving and 300% more than traditional 4-drawer filing cabinets.

As your business grows you can fit more staff into the same area making your office more productive without taking on more expensive floor space.



Mobile cl/w red decorative panels



Floor track

Office Mobile Shelving:

Make the most of your workspace with our office mobile shelving system. Perfect for everyday storage of files, small archives or even for stock in larger retail units.

- A choice of decorative end panels can be added
- Choose push/pull, hand wheel-driven or FollowMe electric drive systems
- Modular construction – move or extend as your business develops
- Combine with track systems to fit any floor
- Security locking options available for added security

For more information
call: 0800 975 4933



Mobile shelving
for all environments

AVANTA

Shelving Systems

Avanta UK Ltd • Unit B1 • Astra Park • Parkside Lane
Leeds • West Yorkshire • LS11 5SZ

Tel: 0113 384 8777

Fax: 0113 384 8778

Email: sales@avantauk.com

Web: www.avantauk.com

